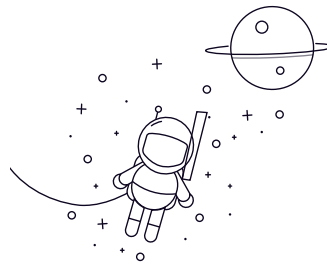


GE...(E)ES-2RS



select	Inquiry	Designation		Dimensions (mm)							$\alpha \approx$	Load Ratings (KN)		Weight (kg)
		Type1	Type2	d	D	B	C	dk	r1s min	r2s min		C	CO	
GE6E	-	6	14	6	4	10	0.3	0.3	13	3.4	17	0.004		
GE8E	-	8	16	8	5	13	0.3	0.3	15	5.5	27.5	0.007		
GE10E	-	10	19	9	6	16	0.3	0.3	12	8.15	40.5	0.011		
GE12E	-	12	22	10	7	18	0.3	0.3	11	10.8	54	0.016		
GB15ES	-	15	26	12	9	22	0.3	0.3	8	17	85	0.025		
GE17ES	-	17	30	14	10	25	0.3	0.3	10	21.2	106	0.041		
GE20ES	GE20ES-2RS	20	35	16	12	29	0.6	0.3	9	30	146	0.061		
GE25ES	GE25ES-2RS	25	42	20	16	35.5	0.6	0.6	7	48	240	0.11		
GE30ES	GE30ES-2RS	30	47	22	18	40.7	0.6	0.6	6	62	310	0.14		
GE35ES	GE35ES-2RS	35	55	25	20	47	0.6	1	6	80	400	0.22		
GE40ES	GE40ES-2RS	40	62	28	22	53	0.6	1	7	100	500	0.3		
GE45ES	GE45ES-2RS	45	68	32	25	60	0.6	1	7	127	640	0.4		
GE50ES	GE50ES-2RS	50	75	35	28	66	0.6	1	6	156	780	0.54		
GE60ES	GE60ES-2RS	60	90	44	36	80	1	1	6	245	1220	1		
GE70ES	GE70ES-2RS	70	105	49	40	92	1	1	6	315	1560	1.5		
GB80BS	GE80ES-2RS	80	120	55	45	105	1	1	6	400	2000	2.2		
GE90ES	GE90ES-2RS	90	130	60	50	115	1	1	5	490	2450	2.7		
GE100ES	GE100ES-2RS	100	150	70	55	130	1	1	7	610	3050	4.3		
GE110ES	GE110ES-2RS	110	160	70	55	140	1	1	6	655	3250	4.7		
GE120ES	GE120ES-2RS	120	180	85	70	160	1	1	6	950	4750	8		
GE140ES	GE140ES-2RS	140	210	90	70	180	1	1	7	1080	5400	11		