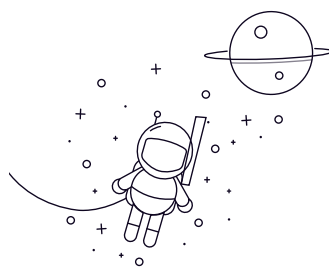


# GE...FW-2RS



select	Inquiry Designation		Dimensions (mm)						Load Ratings		$\alpha$ · Weight ≈ (kg)
			d	D	B	C	r1s min	r2s min	C	CO	
GE4FW	4	14	7	4	0.3	0.3	3.6	9.1	20	0.005	
GE5FW	5	16	9	5	0.3	0.3	5.8	14	21	0.006	
GE6FW	6	16	9	5	0.3	0.3	5.8	14	21	0.008	
GE8FW	8	19	11	6	0.3	0.3	8.6	21	21	0.014	
GE10FW	10	22	12	7	0.3	0.3	11	28	18	0.021	
GE12FW	12	26	15	9	0.3	0.3	18	45	18	0.033	
GE15FW-2RS	15	30	16	10	0.3	0.3	22.4	56	16	0.046	
GE17FW-2RS	17	35	20	12	0.3	0.3	31.5	78	19	0.078	
GE20FW-2RS	20	42	25	16	0.6	0.6	51	127	17	0.15	
GE25FW-2RS	25	47	28	18	0.6	0.6	65.5	166	17	0.19	
GE30FW-2RS	30	55	32	20	0.6	0.6	112	224	17	0.29	
GE35FW-2RS	35	62	35	23	0.6	1	140	280	16	0.39	
GE40FW-2RS	40	68	40	25	0.6	1	180	360	17	0.52	
GE45FW-2RS	45	75	43	28	0.6	1	220	440	15	0.68	
GE50FW-2RS	50	90	56	36	0.6	1	345	695	17	1.4	
GE60FW-2RS	60	105	63	40	1	1	440	880	17	2	
GE70FW-2RS	70	120	70	45	1	1	570	1140	16	2.9	
GE80FW-2RS	80	130	75	50	1	1	695	1370	14	3.5	
GE90FW-2RS	90	150	85	55	1	1	865	1730	15	5.4	
GE100FW-2RS	100	160	85	55	1	1	930	1860	14	5.9	