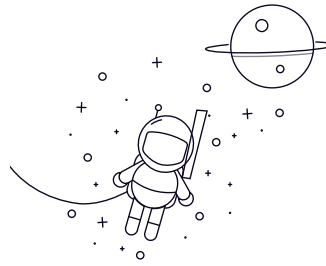


# NOS Series



select Inquiry	Model Number	Main Dimensions (Mm)											Thread M	Permit of Angel $\alpha$	Static load Weight (g)	
		B	W	O	H	D	F	K	J	L	A/F	A				Radial Angel
NOS 5 R/L H.	5	8	7.7	5.5	16	33	-	3	-	-	20	5X0.8	13	5.7	1.5	13
NOS 6 R/L H.	6	9	8.9	6	18	36	-	3.3	-	-	22	6X1.0	13	7	2	17
NOS 8F R/L H.	8	12	10.4	8	22	42	-	4.5	-	-	25	8X1.0	13	11.6	3.5	33
NOS 8 R/L H.	8	12	10.4	8	22	42	-	4.5	-	-	25	8X1.25	13	11.6	3.5	33
NOS 10F R/L H.	10	14	12.9	10	26	48	-	5.5	-	-	29	10X1.25	13	14.5	4.8	54
NOS 10 R/L H.	10	14	12.9	10	26	48	-	5.5	-	-	29	10X1.5	13	14.5	4.8	54
NOS 12F R/L H.	12	16	15.4	11	30	54	-	6	-	-	33	12X1.25	13	17	6.5	85
NOS 12 R/L H.	12	16	15.4	11	30	54	-	6	-	-	33	12X1.75	13	17	6.5	85
NOS 14F R/L H.	14	19	16.8	12	34	60	-	7	-	-	36	14X1.5	15	24	8.2	129
NOS 14 R/L H.	14	19	16.8	12	34	60	-	7	-	-	36	14X2.0	15	24	8.2	129

## NOS Series

NOS 16F R/L H.	16	21	19.3	13	38	66	-	7.5	-	-	40	16X1.5	15	28.5	10	181
NOS 16 R/L H.	16	21	19.3	13	38	66	-	7.5	-	-	40	16X2.0	15	28.5	10	181
NOS 18 R/L H.	18	23	21.8	15	42	72	-	8.5	-	-	44	18X1.5	15	35	12.5	250
NOS 20 R/L H.	20	25	24.3	16	46	78	-	9	-	-	47	20X1.5	15	40	15	333
NOS 22 R/L H.	22	28	25.8	18	50	84	-	10	-	-	51	22X1.5	15	52	18	430
NOS 25 R/L H.	25	31	29.6	20	56	94	-	12	-	-	57	24X12.0	15	60	23	610
NOS 30 R/L H.	30	37	34.8	24	67	110	-	13	-	-	66	30X2.0	15	81	30	990