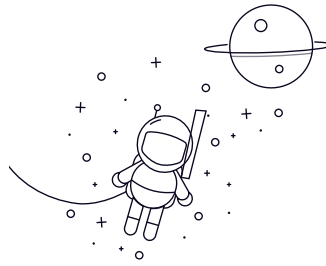


# LM/LF Series



select	Inquiry	Model Number	Thread S	B	D	W	T	Ball Dia. Ø	AM	AF	CM	CF	EØ	F	Permit of Angel α	Static load (LBS)	Weight (LBS)
LM3	UNF 3/16X10.32	0.1875	0.525	0.312	0.204	0.437	1.25	1.032	0.75	0.5	0.405	0.312	20A	1200	0.03		
LF3	UNF 3/16X10.32	0.1875	0.525	0.312	0.204	0.437	1.25	1.032	0.75	0.5	0.405	0.312	20A	1200	0.04		
LM4	1/4-28UNF (M6X1)	0.25 (M6)	0.76	0.375	0.25	0.5	1.562	1.242	1	0.625	0.468	0.375	20A	2000	0.25		
LF4	1/4-28UNF (M6X1)	0.25 (M6)	0.76	0.375	0.25	0.5	1.562	1.242	1	0.625	0.468	0.375	20A	2000	0.76		
LM5	5/16-24UNF(M8X12.5)	0.3125 (M8)	0.875	0.437	0.312	0.625	1.875	1.375	1.25	0.625	0.5	0.437	22A	3000	0.07		
LF5	5/16-24UNF(M8X12.5)	0.3125 (M8)	0.875	0.437	0.312	0.625	1.875	1.375	1.25	0.625	0.5	0.437	22A	3000	0.08		
LM6	3/8-24UNF (M10X1.5)	0.375 (M10)	1	0.5	0.359	0.71	1.939	1.625	1.25	0.75	0.687	0.5	22A	4000	0.12		
LF6	3/8-24UNF (M10X1.5)	0.375 (M10)	1	0.5	0.359	0.71	1.939	1.625	1.25	0.75	0.687	0.5	22A	4000	0.13		
LM7	7/16-20UNF	0.4375	1.125	0.562	0.408	0.79	2.125	1.812	1.375	0.875	0.75	0.625	21A	5000	0.16		
LF7	7/16-20UNF	0.4375	1.125	0.562	0.408	0.79	2.125	1.812	1.375	0.875	0.75	0.625	21A	5000	0.18		
LM8	1/2-20UNF(M12X1.75)	0.5(M12)	1.1312	0.625	0.453	0.875	2.436	2.125	1.5	1	0.875	0.75	20A	6000	0.24		
LF8	1/2-20UNF(M12X1.75)	0.5(M12)	1.1312	0.625	0.453	0.875	2.436	2.125	1.5	1	0.875	0.75	20A	6000	0.29		
LM10	5/8-18UNF(M16X2.0)	0.625 (M16)	1.5	0.75	0.484	1.125	2.625	2.5	1.625	1.25	1	0.875	26A	8000	0.36		
LF10	5/8-18UNF(M16X2.0)	0.625 (M16)	1.5	0.75	0.484	1.125	2.625	2.5	1.625	1.25	1	0.875	26A	8000	0.43		
LM12	3/4-16UNF	0.75	1.75	0.875	0.593	1.25	2.875	2.375	1.75	1.375	1.125	1	21A	10000	0.75		
LF12	3/4-16UNF	0.75	1.75	0.875	0.593	1.25	2.875	2.375	1.75	1.375	1.125	1	21A	10000	0.65		