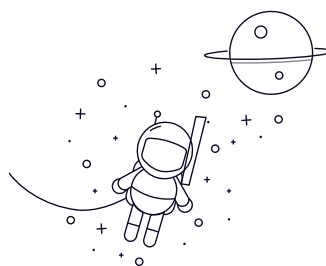


Stainless Steel Angular Contact Ball Bearings



select	Inquiry	Bearing Designation	Dimension [mm]					Mounting dimensions			Weight (Kg)
			d	D	B	r min	r1 min	da(min)	Da(max)	ra(max)	
SS7900	10	22	6	0.3	0.15	12.5	19.5	0.3	0.0091		
SS7000	10	26	8	0.3	0.15	12.5	23.5	0.3	0.0182		
SS7200	10	30	9	0.6	0.3	15	25	0.6	0.0325		
SS7300	10	35	11	0.6	0.3	15	30	0.6	0.052		
SS7901	12	24	6	0.3	0.15	14.5	21.5	0.3	0.0104		
SS7001	12	28	8	0.3	0.15	14.5	25.5	0.3	0.0221		
SS7201	12	32	10	0.6	0.3	17	27	0.6	0.0364		
SS7301	12	37	12	1	0.6	18	31	1	0.0598		
SS7902	15	28	7	0.3	0.15	17.5	25.5	0.3	0.0156		
SS7002	15	32	9	0.3	0.15	17.5	29.5	0.3	0.0312		
SS7202	15	35	11	0.6	0.3	20	30	0.3	0.0455		
SS7302	15	42	13	1	0.6	21	36	1	0.0832		
SS7903	17	30	7	0.3	0.15	19.5	27.5	0.3	0.0169		
SS7003	17	35	10	0.3	0.15	19.5	32.5	0.3	0.0416		
SS7203	17	40	12	0.6	0.3	22	35	0.6	0.0676		
SS7303	17	47	14	1	0.6	23	41	1	0.1131		
SS7904	20	37	9	0.3	0.15	22.5	34.5	0.3	0.0364		
SS7004	20	42	12	0.6	0.3	25	37	0.6	0.0676		
SS7204	20	47	14	1	0.6	26	41	1	0.1066		
SS7304	20	52	15	1.1	0.6	27	45	1	0.143		
SS7905	25	42	9	0.3	0.15	27.5	39.5	0.3	0.0416		

Stainless Steel Angular Contact Ball Bearings

SS7005	25	47	12	0.6	0.3	30	42	0.6	0.0793
SS7205	25	52	15	1	0.6	31	46	1	0.1287
SS7305	25	62	17	1.1	0.6	32	55	1	0.234
SS7906	30	47	9	0.3	0.15	32.5	44.5	1	0.052
SS7006	30	55	13	1	0.6	36	49	1	0.1157
SS7206	30	62	16	1	0.6	36	56	1	0.195
SS7306	30	72	19	1.1	0.6	37	65	1	0.351
SS7907	35	55	10	0.6	0.3	40	50	0.6	0.0754
SS7007	35	62	14	1	0.6	41	56	1	0.156