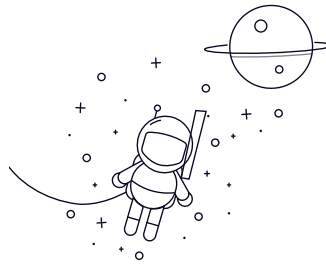


Stainless Steel Self-aligning Ball Bearings



select	Inquiry	Bearing Designation	Dimension [mm]					Mounting dimensions			Weight (Kg)
			d	D	B	r min	r1 min	da(min)	Da(max)	ra(max)	
SS135	5	19	6	0.3	7	17	0.3	0.009			
SS126	6	19	6	0.3	8	17	0.3	0.009			
SS127	7	22	7	0.3	9	20	0.3	0.014			
SS108	8	22	7	0.3	10	20	0.3	0.014			
SS129	9	26	8	0.6	13	22	0.6	0.022			
SS1200	10	30	9	0.6	14	26	0.6	0.034			
SS2200	10	30	14	0.6	14	26	0.6	0.047			
SS1300	10	25	11	0.6	14	31	0.6	0.058			
SS2300	10	25	17	0.6	14	31	0.6	0.085			
SS1201	12	32	10	0.6	16	28	0.6	0.04			
SS2201	12	32	14	0.6	16	28	0.6	0.053			
SS1301	12	37	12	1	17	32	1	0.067			
SS2301	12	37	17	1	17	32	1	0.095			
SS1202	15	35	11	0.6	19	31	0.6	0.049			
SS2202	15	35	14	0.6	19	31	0.6	0.06			
SS1302	15	42	13	1	20	37	1	0.094			
SS2302	15	42	17	1	20	37	1	0.11			
SS1203	17	40	12	0.6	21	36	0.6	0.073			
SS2203	17	40	16	0.6	21	36	0.6	0.088			
SS1303	17	47	14	1	22	42	1	0.13			
SS2303	17	47	19	1	22	42	1	0.16			

Stainless Steel Self-aligning Ball Bearings

SS1204	20	47	14	1	25	42	1	0.12
SS2204	20	47	18	1	25	42	1	0.14
SS1304	20	52	15	1.1	26.5	45.5	1	0.16
SS1304	20	52	21	1.1	26.5	45.5	1	0.21
SS1205	25	52	15	1	30	47	1	0.14
SS2205	25	52	18	1	30	47	1	0.16
SS1305	25	62	17	1.1	31.5	55.5	1	0.26
SS2305	25	62	24	1.1	31.5	55.5	1	0.34
SS1206	30	62	16	1	35	57	1	0.22