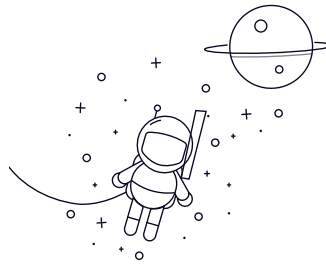


## Stainless Steel Thrust Ball Bearings



select	Inquiry	Bearing Designation	Dimension [mm]				Mounting dimensions		Weight(Kg)	
			d	D	B	rs min	d1(min)	D1(max)	ZrO2	Si3N4
SS51100	10	24	9	0.3	24	11	0.015	0.0078		
SS51200	10	26	11	0.6	26	12	0.022	0.011		
SS51101	12	26	9	0.3	26	13	0.016	0.009		
SS51201	12	28	11	0.6	28	14	0.024	0.013		
SS51102	15	28	9	0.3	28	16	0.018	0.0094		
SS51202	15	32	12	0.6	32	17	0.033	0.018		
SS51103	17	30	9	0.3	30	18	0.019	0.01		
SS51203	17	35	12	0.6	35	19	0.038	0.021		
SS51104	20	35	10	0.3	35	21	0.028	0.015		
SS51204	20	40	14	0.6	40	22	0.059	0.032		
SS51105	25	42	11	0.6	42	26	0.043	0.023		
SS51205	25	47	15	0.6	47	27	0.085	0.046		
SS51106	30	47	11	0.6	47	32	0.049	0.026		
SS51206	30	52	16	0.6	52	32	0.11	0.056		
SS51107	35	52	12	0.6	52	37	0.062	0.033		
SS51207	35	62	18	1	62	37	0.16	0.086		
SS51108	40	60	13	0.6	60	42	0.092	0.049		
SS51208	40	68	19	1	68	42	0.21	0.11		
SS51109	45	65	14	0.6	65	47	0.11	0.059		
SS51209	45	73	20	1	73	47	0.24	0.13		
SS51110	50	70	14	0.6	70	52	0.12	0.063		

### Stainless Steel Thrust Ball Bearings

SS51210	50	78	22	1	78	52	0.29	0.16
SS51111	55	78	16	0.6	78	57	0.17	0.093
SS51211	55	90	25	1	90	57	0.46	0.25
SS51112	60	85	17	1	85	62	0.22	0.12
SS51212	60	95	26	1	95	62	0.52	0.28
SS51113	65	90	18	1	90	67	0.25	0.13
SS51213	65	100	27	1	100	67	0.58	0.31
SS51114	70	95	18	1	95	72	0.27	0.14
SS51214	70	105	27	1	105	72	0.61	0.33