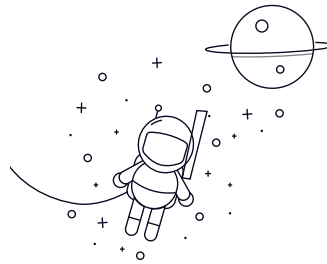


Stainless Steel Insert Bearing



select	Inquiry	Bearing Designation	Dimension [mm]					Mounting dimensions		Weight(Kg)	
			d	D	B	S	C	r/min	G	ds	ZrO2
SSUC201	12	47	31	12.7	17	0.6	4.5	M6 x 1	0.208		
SSUC202	15	47	31	12.7	17	0.6	4.5	M6 x 1	0.195		
SSUC203	17	47	31	12.7	17	0.6	4.5	M6 x 1	0.182		
SSUC204	20	47	31	12.7	17	1	4.5	M6 x 1	0.156		
SSUC205	25	52	34.1	14.3	17V	1	5	M6 x 1	0.221		
SSUC206	30	62	38.1	15.9	19	1	5	M6 x 1	0.351		
SSUC207	35	72	42.9	17.5	20	1.1	6	M8 x 1	0.52		
SSUC208	40	80	49.2	19	21	1.1	8	M8 x 1	0.702		
SSUC209	45	85	49.2	19	22	1.1	8	M8 x 1	0.741		
SSUC210	50	90	51.6	19	24	1.1	9	M10 x 1	0.832		
SSUC211	55	100	55.6	22.2	25	1.5	9	M10 x 1	1.157		
SSUC212	60	110	65.1	25.4	27	1.5	10	M10 x 1	1.56		
SSUC213	65	120	65.1	25.4	27	1.5	10	M10 x 1	1.963		
SSUC214	70	125	74.6	30.2	29	1.5	12	M12 x 1.25	2.184		
SSUC215	75	130	77.8	33.3	30	1.5	12	M12 x 1.25	2.418		
SSUC216	80	140	82.6	33.3	33	2	14	M12 x 1.25	2.821		
SSUC217	85	150	85.7	34.1	36	2	14	M12 x 1.25	3.406		

Stainless Steel Insert Bearing

SSUC218	90	160	96	39.7	37	2	14	M12 x 1.25	4.303
SSUC220	100	180	108	42	41	2	14	M12 x 1.25	4.498