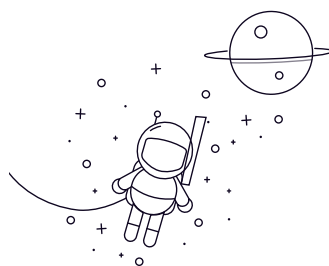


## SSUCF Series



select	Inquiry	Designation	d Shaft diameter		Dimensions(mm)							Weight S (kg)
			(in)	(mm)	L	J	A2	A1	A	N	Z	
SSUCF204 A		20	86	64	15	11	25.5	12	33.3	31	M10	0.71
SSUCF204-12 A	3/4	20	86	64	15	11	25.5	12	33.3	31	M10	0.71
SSUCF205 A		25	95	70	16	13	28	12	35.8	34.1	M10	0.97
SSUCF205-14 A	7/8	25	95	70	16	13	28	12	35.8	34.1	M10	0.97
SSUCF205-15 A	15/16	25	95	70	16	13	28	12	35.8	34.1	M10	0.97
SSUCF205-16 A	1	25	95	70	16	13	28	12	35.8	34.1	M10	0.97
SSUCF206 A		30	108	83	18	13	31	12	40.2	38.1	M10	1.41
SSUCF206-17 A	1-1/16	30	108	83	18	13	31	12	40.2	38.1	M10	1.41
SSUCF206-18 A	1-1/8	30	108	83	18	13	31	12	40.2	38.1	M10	1.41
SSUCF206-19 A	1-3/16	30	108	83	18	13	31	12	40.2	38.1	M10	1.41
SSUCF206-20 A	1-1/4	30	108	83	18	13	31	12	40.2	38.1	M10	1.41
SSUCF207 A		35	117	92	19	15	34	14	44.4	42.9	M12	1.86
SSUCF207-20 A	1-1/4	35	117	92	19	15	34	14	44.4	42.9	M12	1.86
SSUCF207-21 A	1-5/16	35	117	92	19	15	34	14	44.4	42.9	M12	1.86
SSUCF207-22 A	1-3/8	35	117	92	19	15	34	14	44.4	42.9	M12	1.86
SSUCF207-23 A	1-7/16	35	117	92	19	15	34	14	44.4	42.9	M12	1.86
SSUCF208 A		40	130	102	21	15	36	16	51.2	49.2	M14	2.3

SSUCF Series

SSUCF208-24 A	1-1/2	40	130	102	21	15	36	16	51.2	49.2	M14	2.3
SSUCF208-25 A	1-9/16	40	130	102	21	15	36	16	51.2	49.2	M14	2.3
SSUCF209 A		45	137	105	22	16	38	16	52.2	49.2	M14	2.71
SSUCF209-26 A	1-5/8	45	137	105	22	16	38	16	52.2	49.2	M14	2.71
SSUCF209-27 A	1-11/16	45	137	105	22	16	38	16	52.2	49.2	M14	2.71
SSUCF209-28 A	1-3/4	45	137	105	22	16	38	16	52.2	49.2	M14	2.71
SSUCF210 A		50	143	111	22	16	40	16	54.6	51.6	M14	2.93
SSUCF210-30 A	1-7/8	50	143	111	22	16	40	16	54.6	51.6	M14	2.93
SSUCF210-31 A	1-15/16	50	143	111	22	16	40	16	54.6	51.6	M14	2.93
SSUCF210-32 A	2	50	143	111	22	16	40	16	54.6	51.6	M14	2.93
SSUCF211 A		55	162	130	25	18	43	19	58.4	55.6	M16	4.13
SSUCF211-32 A	2	55	162	130	25	18	43	19	58.4	55.6	M16	4.13
SSUCF211-34 A	2-1/8	55	162	130	25	18	43	19	58.4	55.6	M16	4.13