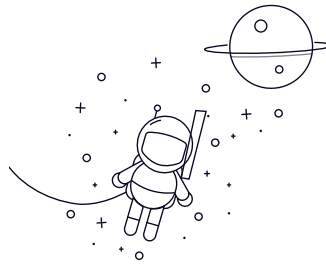


SSUCP Series



select	Inquiry	Designation	d Shaft diameter		Dimensions(mm)								Weight		
			(in)	(mm)	H	L	J	A	N	N1	H1	Ho	B	s	(kg)
SSUCP204 A		20	33.3	127	95	30	13	19	14	64	12.7	M10	0.71		
SSUCP204-12 A	3/4	20	33.3	127	95	30	13	19	14	64	12.7	M10	0.71		
SSUCP205 A		25	36.5	140	105	30	13	19	15	70	14.3	M10	0.82		
SSUCP205-14 A	7/8	25	36.5	140	105	30	13	19	15	70	14.3	M10	0.82		
SSUCP205-15 A	15/16	25	36.5	140	105	30	13	19	15	70	14.3	M10	0.82		
SSUCP205-16 A	1	25	36.5	140	105	30	13	19	15	70	14.3	M10	0.82		
SSUCP206 A		30	42.9	165	121	36	17	21	16	82	15.9	M12	1.31		
SSUCP206-17 A	1-1/16	30	42.9	165	121	36	17	21	16	82	15.9	M12	1.31		
SSUCP206-18 A	1-1/8	30	42.9	165	121	36	17	21	16	82	15.9	M12	1.31		
SSUCP206-19 A	1-3/16	30	42.9	165	121	36	17	21	16	82	15.9	M12	1.31		
SSUCP206-20 A	1-1/4	30	42.9	165	121	36	17	21	16	82	15.9	M12	1.31		
SSUCP207 A		35	47.6	167	127	38	17	21	17	92	17.5	M12	1.65		
SSUCP207-20 A	1-1/4	35	47.6	167	127	38	17	21	17	92	17.5	M12	1.65		
SSUCP207-21 A	1-5/16	35	47.6	167	127	38	17	21	17	92	17.5	M12	1.65		
SSUCP207-22 A	1-3/8	35	47.6	167	127	38	17	21	17	92	17.5	M12	1.65		
SSUCP207-23 A	1-7/16	35	47.6	167	127	38	17	21	17	92	17.5	M12	1.65		
SSUCP208 A		40	49.2	184	137	40	17	21	18	98	19	M12	2		
SSUCP208-24 A	1-1/2	40	49.2	184	137	40	17	21	18	98	19	M12	2		

SSUCP Series

SSUCP208-25 A	1-9/16	40	49.2	184	137	40	17	21	18	98	19	M12	2		
SSUCP209 A		45	54	190	146	40	17	21	20	105	19	M12	2.26		
SSUCP209-26 A	1-5/8	45	54	190	146	40	17	21	20	105	19	M12	2.26		
SSUCP209-27 A	1-11/16	45	54	190	146	40	17	21	20	105	19	M12	2.26		
SSUCP209-28 A	1-3/4	45	54	190	146	40	17	21	20	105	19	M12	2.26		
SSUCP210 A		50	57.2	206	159	45	20	22	22	112	19	M16	2.8		
SSUCP210-30 A	1-7/8	50	57.2	206	159	45	20	22	22	112	19	M16	2.8		
SSUCP210-31 A	1-15/16	50	57.2	206	159	45	20	22	22	112	19	M16	2.8		
SSUCP210-32 A	2	50	57.2	206	159	45	20	22	22	112	19	M16	2.8		
SSUCP211 A		55	63.5	218	171	50	20	22	22	126	22.2	M16	3.83		
SSUCP211-32 A	2	55	63.5	218	171	50	20	22	22	126	22.2	M16	3.83		
SSUCP211-34 A	2-1/8	55	63.5	218	171	50	20	22	22	126	22.2	M16	3.83		