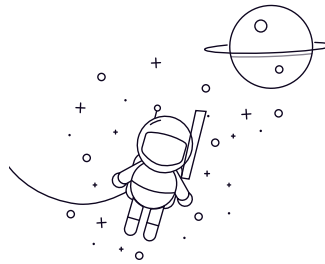


SSUCFL Series



select	Inquiry	Designation	d Shaft diameter		Dimensions(mm)									Weight	
			(in)	(mm)	H	J	A2	A1	A	N	L	z	B	S (kg)	
SSUCFL204 A		20	113	90	15	11	27	12	60	33.3	12.7	M10	0.5		
SSUCFL204-12 A	3/4	20	113	90	15	11	27	12	60	33.3	12.7	M10	0.5		
SSUCFL205 A		25	130	99	16	13	28	12.5	68	35.8	14.3	M14	0.71		
SSUCFL205-14 A	7/8	25	130	99	16	13	28	12.5	68	35.8	14.3	M14	0.71		
SSUCFL205-15 A	15/16	25	130	99	16	13	28	12.5	68	35.8	14.3	M14	0.71		
SSUCFL205-16 A	1	25	130	99	16	13	28	12.5	68	35.8	14.3	M14	0.71		
SSUCFL206 A		30	148	117	18	13	31	12.5	79	40.2	15.9	M14	1.04		
SSUCFL206-17 A	1-1/16	30	148	117	18	13	31	12.5	79	40.2	15.9	M14	1.04		
SSUCFL206-18 A	1-1/8	30	148	117	18	13	31	12.5	79	40.2	15.9	M14	1.04		
SSUCFL206-19 A	1-3/16	30	148	117	18	13	31	12.5	79	40.2	15.9	M14	1.04		
SSUCFL206-20 A	1-1/4	30	148	117	18	13	31	12.5	79	40.2	15.9	M14	1.04		
SSUCFL207 A		35	161	130	19	14	34	14	90	44.4	17.5	M14	1.38		
SSUCFL207-20 A	1-1/4	35	161	130	19	14	34	14	90	44.4	17.5	M14	1.38		
SSUCFL207-21 A	1-5/16	35	161	130	19	14	34	14	90	44.4	17.5	M14	1.38		
SSUCFL207-22 A	1-3/8	35	161	130	19	14	34	14	90	44.4	17.5	M14	1.38		
SSUCFL207-23 A	1-7/16	35	161	130	19	14	34	14	90	44.4	17.5	M14	1.38		
SSUCFL208 A		40	175	144	21	15	36	14	100	51.2	19	M14	1.73		
SSUCFL208-24 A	1-1/2	40	175	144	21	15	36	14	100	51.2	19	M14	1.73		

SSUCFL Series

SSUCFL208-25 A	1-9/16	40	175	144	21	15	36	14	100	51.2	19	M14	1.73
SSUCFL209 A		45	187	148	22	16	38	16	108	52.2	19	M16	2.07
SSUCFL209-26 A	1-5/8	45	187	148	22	16	38	16	108	52.2	19	M16	2.07
SSUCFL209-27 A	1-11/16	45	187	148	22	16	38	16	108	52.2	19	M16	2.07
SSUCFL209-28 A	1-3/4	45	187	148	22	16	38	16	108	52.2	19	M16	2.07
SSUCFL210 A		50	195	157	22	16	40	16	115	54.6	19	M16	2.47
SSUCFL210-30 A	1-7/8	50	195	157	22	16	40	16	115	54.6	19	M16	2.47
SSUCFL210-31 A	1-15/16	50	195	157	22	16	40	16	115	54.6	19	M16	2.47
SSUCFL210-32 A	2	50	195	157	22	16	40	16	115	54.6	19	M16	2.47
SSUCFL204 EHB		20	113	90	15	11.5	27	10.5	60	33.3	12.7	M8	0.5
SSUCFL204-12 EHB	3/4	20	113	90	15	11.5	27	10.5	60	33.3	12.7	M8	0.5
SSUCFL205 EHB		25	130	99	16	13	28	12.5	68	35.8	14.3	M10	0.69