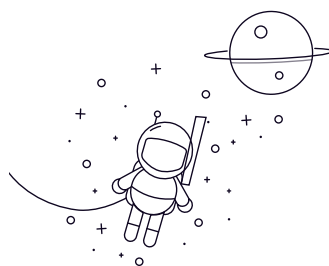


SSUCPA200 Series



select	Inquiry	Designation	Shaft diameter		Dimensions mm								Weight (kg)
			(in)	(mm)	H	L	J	A	G	H1	Ho	B	
SSUCPA204		20	33.3	76	52	38	13	11	62	31	M10	0.62	
SSUCPA204-12	3/4	20	33.3	76	52	38	13	11	62	31	M10	0.62	
SSUCPA205		25	36.5	84	56	38	15	12	72	34.1	M10	0.78	
SSUCPA205-14	7/8	25	36.5	84	56	38	15	12	72	34.1	M10	0.78	
SSUCPA205-15	15/16	25	36.5	84	56	38	15	12	72	34.1	M10	0.78	
SSUCPA205-16	1	25	36.5	84	56	38	15	12	72	34.1	M10	0.78	
SSUCPA206		30	42.9	94	66	48	18	12	84	38.1	M14	1.24	
SSUCPA206-17	1-1/16	30	42.9	94	66	48	18	12	84	38.1	M14	1.24	
SSUCPA206-18	1-1/8	30	42.9	94	66	48	18	12	84	38.1	M14	1.24	
SSUCPA206-19	1-3/16	30	42.9	94	66	48	18	12	84	38.1	M14	1.24	
SSUCPA206-20	1-1/4	30	42.9	94	66	48	18	12	84	38.1	M14	1.24	
SSUCPA207		35	47.6	110	80	48	20	13	95	42.9	M14	1.7	
SSUCPA207-20	1-1/4	35	47.6	110	80	48	20	13	95	42.9	M14	1.7	
SSUCPA207-21	1-5/16	35	47.6	110	80	48	20	13	95	42.9	M14	1.7	
SSUCPA207-22	1-3/8	35	47.6	110	80	48	20	13	95	42.9	M14	1.7	
SSUCPA207-23	1-7/16	35	47.6	110	80	48	20	13	95	42.9	M14	1.7	
SSUCPA208		40	49.2	116	84	54	20	13	100	49.2	M14	1.9	
SSUCPA208-24	1-1/2	40	49.2	116	84	54	20	13	100	49.2	M14	1.9	
SSUCPA208-25	1-9/16	40	49.2	116	84	54	20	13	100	49.2	M14	1.9	
SSUCPA209		45	54.2	120	90	54	25	13	108	49.2	M14	2.2	
SSUCPA209-26	1-5/8	45	54.2	120	90	54	25	13	108	49.2	M14	2.2	
SSUCPA209-27	1-11/16	45	54.2	120	90	54	25	13	108	49.2	M14	2.2	
SSUCPA209-28	1-3/4	45	54.2	120	90	54	25	13	108	49.2	M14	2.2	
SSUCPA210		50	57.2	130	94	60	25	14	116	51.6	M16	2.6	

SSUCPA200 Series

SSUCPA210-30	1-7/8	50	57.2	130	94	60	25	14	116	51.6	M16	2.6
SSUCPA210-31	1-15/16	50	57.2	130	94	60	25	14	116	51.6	M16	2.6
SSUCPA210-32	2	50	57.2	130	94	60	25	14	116	51.6	M16	2.6
SSUCPA204 A		20	33.3	73	50.8	38	13	12	65	31	3/8"-16	0.69
SSUCPA204-12 A	3/4	20	33.3	73	50.8	38	13	12	65	31	3/8"-16	0.69
SSUCPA205 A		25	36.5	76	50.8	38	13	12	71	34.1	3/8"-16	0.77