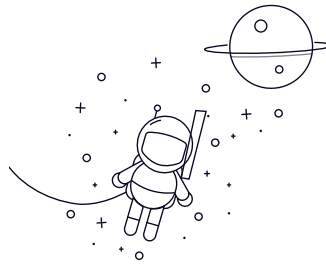


## GEEW.ES Series



select	Inquiry	Bearing Designation	Dimensions(mm)							Load Rating(KN)		Weight ≈Kg
			d	D	B	c	dk	rs	r1s min	Dynamic Load	Static Load	
GEEW12ES	12	22	12	7	18	0.3	0.3	10	53	0.022		
GEEW15ES	15	26	15	9	22	0.3	0.3	16	84	0.031		
GEEW16ES	16	28	16	9	23	0.3	0.3	17	85	0.035		
GEEW17ES	17	30	17	10	25	0.3	0.3	21	106	0.044		
GEEW20ES	20	35	20	12	29	0.3	0.3	30	146	0.071		
GEEW25ES	25	42	25	16	35.5	0.6	0.6	48	240	0.131		
GEEW30ES	30	47	30	18	40.7	0.6	0.6	62	310	0.168		
GEEW32ES	32	52	32	18	43	0.6	1	65	328	0.182		
GEEW35ES	35	55	35	20	47	0.6	1	79	399	0.253		
GEEW40ES	40	62	40	22	53	0.6	1	99	495	0.338		
GEEW45ES	45	68	45	25	60	0.6	1	127	637	0.481		
GEEW50ES	50	75	50	28	66	0.6	1	156	780	0.558		
GEEW60ES	60	90	60	36	80	1	1	245	1220	1.15		
GEEW63ES	63	95	63	36	83	1	1	253	1260	1.25		
GEEW70ES	70	105	70	40	92	1	1	313	1560	1.71		
GEEW80ES	80	120	80	45	105	1	1	400	2000	2.39		
GEEW90ES	90	130	90	50	115	1	1	488	2440	3.21		
GEEW100ES	100	150	100	55	130	1	1	607	3030	4.79		
GEEW110ES	110	160	110	55	140	1	1	654	3270	5.78		
GEEW125ES	125	180	125	70	160	1	1	950	4750	8.49		
GEEW160ES	160	230	160	80	200	1	1	1360	6800	16.5		
GEEW200ES	200	290	200	100	250	1.1	1.1	2120	10600	32.1		

### GEEW.ES Series

---

GEEW250ES	250	400	250	120	350	1.1	1.1	3750	17800	99.1
GEEW320ES	320	520	320	160	450	1.1	1.1	6200	30500	22.5