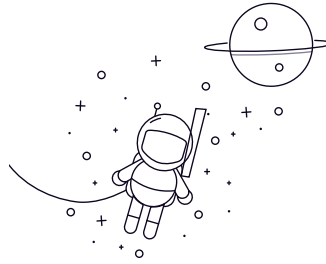
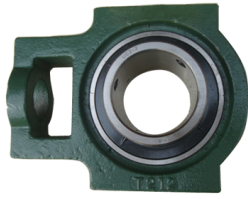


# UCT Series



select	Inquiry	Unit No.	Bearing No.	Housing No.	Shaft Dia		Boundary dimensions(mm)														Mass(Kg)
					in.	mm	o	g	p	q	s	b	k	e	a	w	l	j	r	h	
UCT201-8	UC201-8	T204	1/2	-	16	10	51	32	19	51	12	76.2	89	94	21	32	33	61	31	12.7	0.77
UCT202-10	UC202-10	T204	5/8	-	16	10	51	32	19	51	12	76.2	89	94	21	32	33	61	31	12.7	0.77
UCT204	UC204	T204	-	20	16	10	51	32	19	51	12	76.2	89	94	21	32	33	61	31	12.7	0.77
UCT204-12	UC204-12	T204	3/4	-	16	10	51	32	19	51	12	76.2	89	94	21	32	33	61	31	12.7	0.77
UCT205	UC205	T205	-	25	16	10	51	32	19	51	12	76.2	89	97	24	32	35	62	34	14.3	0.86
UCT205-14	UC205-14	T205	7/8	-	16	10	51	32	19	51	12	76.2	89	97	24	32	35	62	34	14.3	0.86
UCT205-15	UC205-15	T205	15/16	-	16	10	51	32	19	51	12	76.2	89	97	24	32	35	62	34	14.3	0.86
UCT205-16	UC205-16	T205	1	-	16	10	51	32	19	51	12	76.2	89	97	24	32	35	62	34	14.3	0.86
UCT206	UC206	T206	-	30	16	10	56	37	22	57	12	89	102	113	28	37	43	70	38.1	15.9	1.32
UCT206-17	UC206-17	T206	1-1/16	-	16	10	56	37	22	57	12	89	102	113	28	37	43	70	38.1	15.9	1.32
UCT206-18	UC206-18	T206	1-1/8	-	16	10	56	37	22	57	12	89	102	113	28	37	43	70	38.1	15.9	1.32
UCT206-19	UC206-19	T206	1-3/16	-	16	10	56	37	22	57	12	89	102	113	28	37	43	70	38.1	15.9	1.32
UCT206-20	UC206-20	T206	1-1/4	-	16	10	56	37	22	57	12	89	102	113	28	37	43	70	38.1	15.9	1.32
UCT207	UC207	T207	-	35	16	13	64	37	22	64	12	89	102	129	30	37	51	78	42.9	17.5	1.59
UCT207-20	UC207-20	T207	1-1/4	-	16	13	64	37	22	64	12	89	102	129	30	37	51	78	42.9	17.5	1.59
UCT207-21	UC207-21	T207	1-5/16	-	16	13	64	37	22	64	12	89	102	129	30	37	51	78	42.9	17.5	1.59
UCT207-22	UC207-22	T207	1-3/8	-	16	13	64	37	22	64	12	89	102	129	30	37	51	78	42.9	17.5	1.59
UCT207-23	UC207-23	T207	1-7/16	-	16	13	64	37	22	64	12	89	102	129	30	37	51	78	42.9	17.5	1.59
UCT208	UC208	T208	-	40	19	16	83	49	29	83	16	102	114	144	33	49	56	88	49.2	19	2.3
UCT208-24	UC208-24	T208	1-1/2	-	19	16	83	49	29	83	16	102	114	144	33	49	56	88	49.2	19	2.3
UCT208-25	UC208-25	T208	1-9/16	-	19	16	83	49	29	83	16	102	114	144	33	49	56	88	49.2	19	2.3
UCT209	UC209	T209	-	45	19	16	83	49	29	83	16	102	117	145	35	49	57	88	49.2	19	2.5
UCT209-26	UC209-26	T209	1-5/8	-	19	16	83	49	29	83	16	102	117	145	35	49	57	88	49.2	19	2.5
UCT209-27	UC209-27	T209	1-11/16	-	19	16	83	49	29	83	16	102	117	145	35	49	57	88	49.2	19	2.5
UCT209-28	UC209-28	T209	1-3/4	-	19	16	83	49	29	83	16	102	117	145	35	49	57	88	49.2	19	2.5
UCT210	UC210	T210	-	50	19	16	83	49	29	86	16	102	117	151	37	49	59	92	51.6	19	2.6
UCT210-30	UC210-30	T210	1-7/8	-	19	16	83	49	29	86	16	102	117	151	37	49	59	92	51.6	19	2.6
UCT210-31	UC210-31	T210	1-15/16	-	19	16	83	49	29	86	16	102	117	151	37	49	59	92	51.6	19	2.6
UCT210-32	UC210-32	T210	2	-	19	16	83	49	29	86	16	102	117	151	37	49	59	92	51.6	19	2.6
UCT211	UC211	T211	-	55	25	19	102	64	35	95	22	130	146	171	38	64	65	106	55.6	22.2	4.1