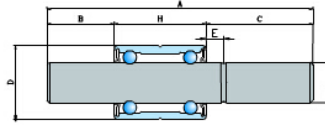


WR Series



select	Inquiry	Bearing Number	Boundary dimensions(mm)									
			D	L	A	d	B	C	d1	d2	S1	S2 E
WR1530085D	30	38.9	85	15.008	13.1	33		12.038		32		
WR1530087D	30	38.9	87	15.008	15	33.1		12.055		30.2		
WR1630096	30	38.9	95.45	15.918	14.32	42.32					39.32	
WR1630096D	30	33.4	96.25	15.918	14.94	47.91		12		45.4		
WR1630096D-1	30	33.8	96.3	15.918	14.6	47.9		12.038		46.4		
WR1630096D-2	30	38.9	95.5	15.918	14.18	42.42		12.037		40.39		
WR1630096D-3	30	38.9	95.63	15.918	17.53	39.2		12		34.9		
WR1630096D-4	30	38.9	96	15.918	15	42.1		12.038		37.5		
WR1630096D-5	30	38.9	96.4	15.918	18	39.5		12.052		36.6		
WR1630097D	30	38.9	96.49	15.918	16.44	41.15		12		38.51		
WR1630097D-1	30	38.9	96.5	15.918	15.35	42.25		12.738		40		
WR1630098	30	38.9	98	16	18.1	41					38	
WR1630098D	30	38.9	97.51	15.918	19.51	39.1		12.037		37.31		
WR1630098D-1	30	38.9	98	15.918	17	42.1		12		40		
WR1630099	30	34.5	99.1	15.918	18.9	45.7						
WR1630099D-1	30	38.9	98.78	15.918	18.42	41.46		12.052		38.9		
WR1630099D-2	30	38.9	98.79	15.918	18.43	41.46		12.038		39.46		
WR1630100D	30	38.9	99.85	15.918	10.5	50.45		12.038		43.3		
WR1630100D-1	30	38.9	99.85	15.918	10.81	50.14		12.037		43.31		
WR1630100D-2	30	46	99.54	15.918	16.89	36.65		12		33.55		
WR1630100DD	30	38.9	99.49	15.918	16.47	44.12	12	12	14.61	41.28		
WR1630101	30	38.9	100.85	15.918	16	45.95						
WR1630101-1	30	38.9	100.99	15.918	25.25	36.84					31.14	
WR1630101D	30	27	101	15.918	31.8	42.2		12		40.7		
WR1630101D-1	30	38.9	100.51	15.918	18.01	43.6		12		33.5		
WR1630101D-2	30	38.9	101	15.918	24.99	37.11		12		34.98		

WR Series

WR1630101DD	30	38.9	101.09	15.918	22.84	39.35	12.002	12.042	19.84	38.61	
WR1630102	30	36.5	101.5	15.951	20	45					
WR1630102-1	30	38.9	102	15.918	17	46.1					41.3
WR1630102-2	30.003	36.5	101.5	15.918	26	39					